







 3 Bedrooms
 |
  1 Reception
 |
  1 Bathrooms
 |
  EPC Current D

Helliwell & Co. are proud to present A 1930s three-bedroom semi-detached home with a larger than average south-facing garden and offered to the market with no onward chain.

This house is situated moments from exemplary schools and offers buyers the potential to add their own stamp, along with scope to extend (Planning permission granted). As you enter the front door, you are met with a spacious hallway leading to a large reception room with shelving and storage. The fitted kitchen comes equipped with appliances and a large double cooker with bi-folding doors onto a vast south-facing garden. There is also a shower room and WC located on the ground floor. Upstairs you have three bedrooms, two doubles with ample storage and a single bedroom ideal as a home office or nursery. Further benefits include double glazing, gas central heating, side access and loft storage.

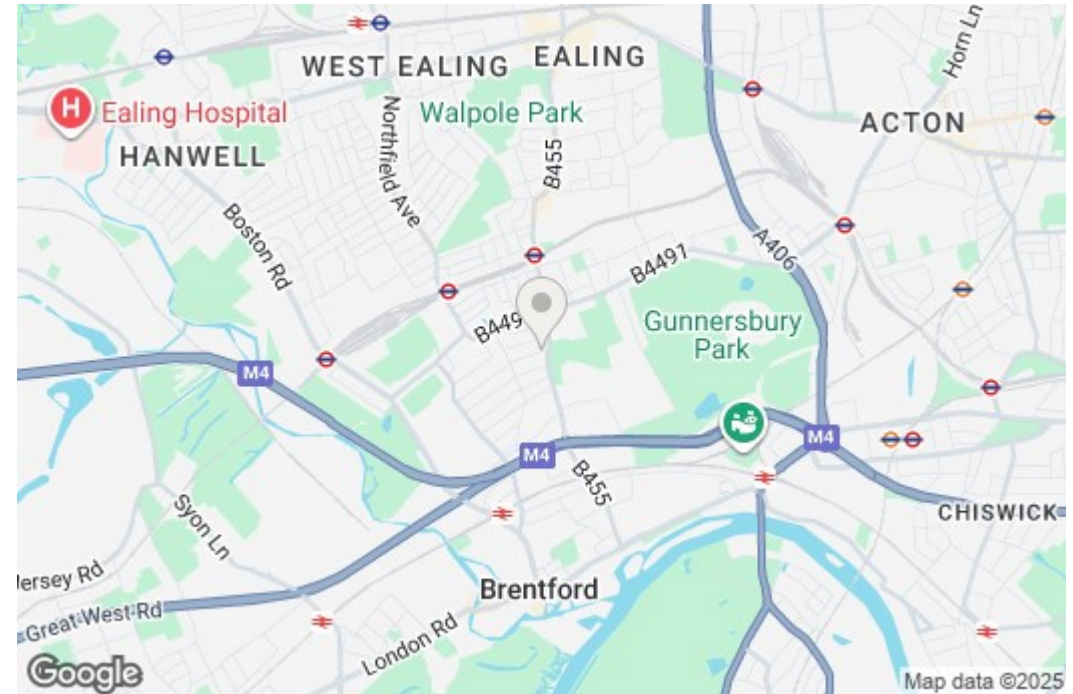
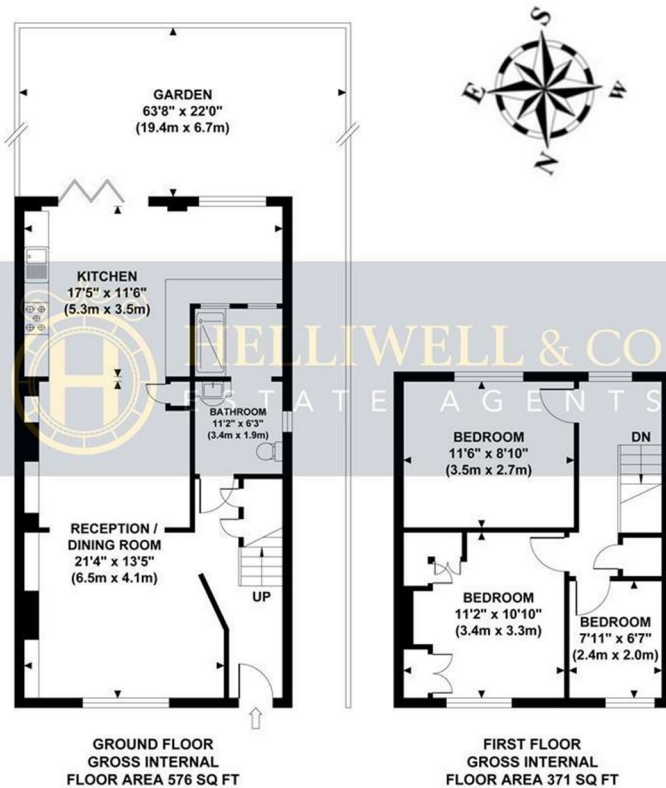
Murray Road is situated on a quiet residential street, well-placed for a variety of schools, all boasting exemplary reputations, and an abundance of fantastic parks, boutiques, cafes, delis, pubs and restaurants available along Northfields Avenue and beyond. There are numerous transport links, including various bus routes, South Ealing and Northfields Stations (Piccadilly Line) and Brentford (National Rail). Motorists have easy access to the A4/M4, and there are excellent cycling routes. The green open spaces of Blondin, Boston Manor, Lammas, Walpole and Gunnersbury Parks are all within walking distance.

- Semi-detached
- Side Access
- Double Glazing
- Ample Storage
- Large South Facing Garden
- No Onward Chain
- Potential to Extend (Planning Permission Granted)
- Exemplary Schools
- Tenure: Freehold
- Council Tax Band: D

MURRAY TERRACE

Approximate Gross Internal Area

947 sq ft / 88.0 sq m



Although every attempt has been made to ensure accuracy, all measurements are approximate and no responsibility is taken for any error, omission, or mid-statement. This floor plan is for illustrative purposes only and not to scale. Measured in accordance to RICS standards.